

# Pend Oreille Rowing and Paddling Association

## Weather and Air Quality Policy

Updated May 8th, 2022

In PORPA one of our guiding mottos is Safety First. For this reason we have established the following flowchart to stop a practice or an event due to inclement weather or unhealthy air quality forecast. Even though we row 'rain or shine', there are circumstances when we should stop.

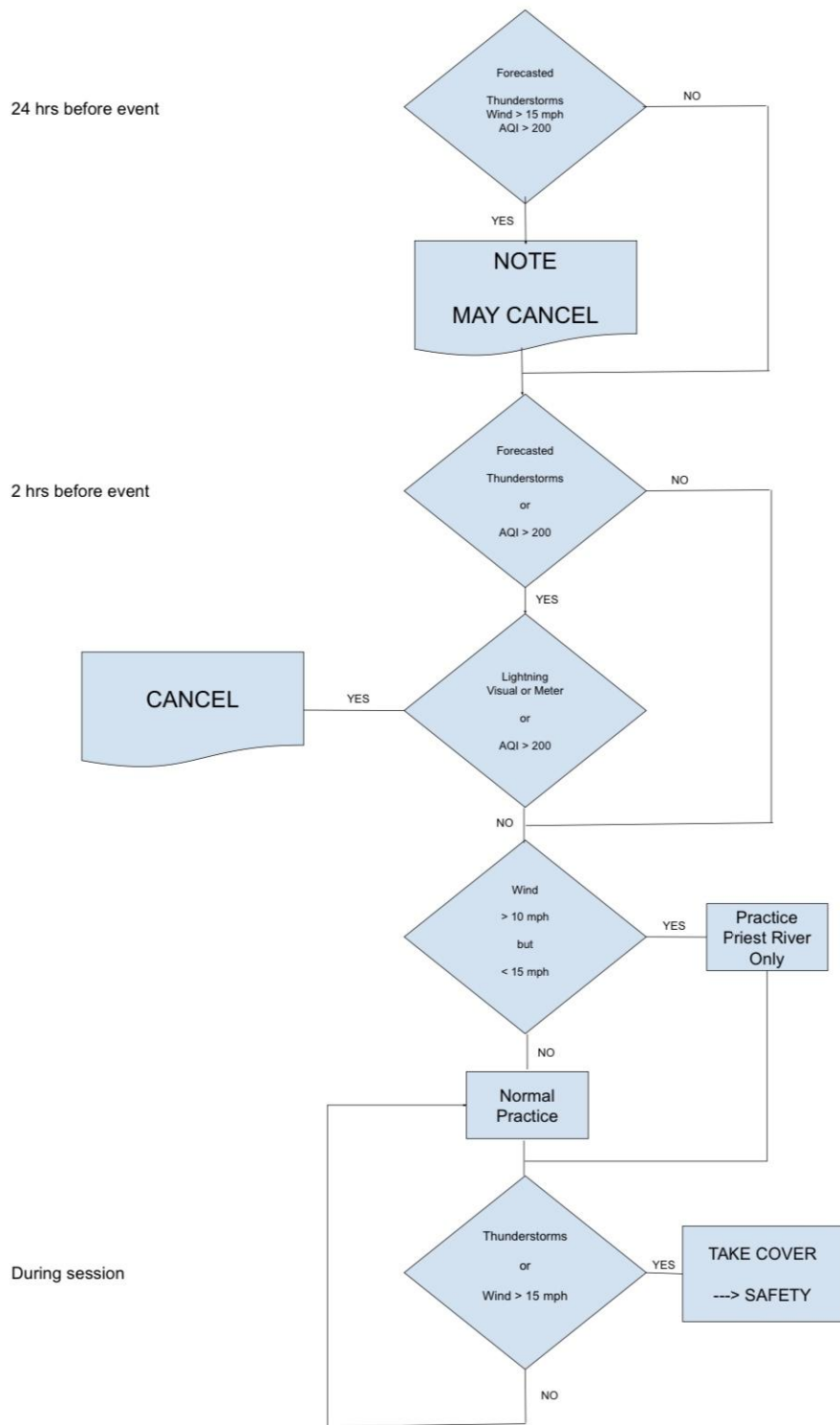
### PRACTICE

#### STOP-DUE-TO-WEATHER/AIR-QUALITY FLOWCHART

Due to the difficulty of forecasting weather and air quality precisely in Northern Idaho, we have come up with the following flowchart to establish fixed go no go levels for decision making for the team captain if applicable or the individual rower(s).

- 1) 24 hours before a scheduled practice, weather forecast and air quality index should be monitored.
- 2) If a thunderstorm, sustained winds above 15 mph or AQI above 200 are expected the team captain is to send out notice that practice might be cancelled.
- 3) 2 hours before a scheduled practice and until practice starts, weather forecast, lightning alerts and air quality index should be monitored.
- 4) If lightning is forecasted **and** there is visual/audible evidence of a storm or the lightning meter shows activity or if AQI is above 200 the session is cancelled.
- 5) If sustained winds are above 10 mph the session will only be on the Priest River, upriver from the railroad bridge if there are no white caps on the Priest River.
- 6) If during the practice un-predicted weather moves in or air quality worsens, the practice will be cancelled following as safe as possible steps.

# Practice Flowchart



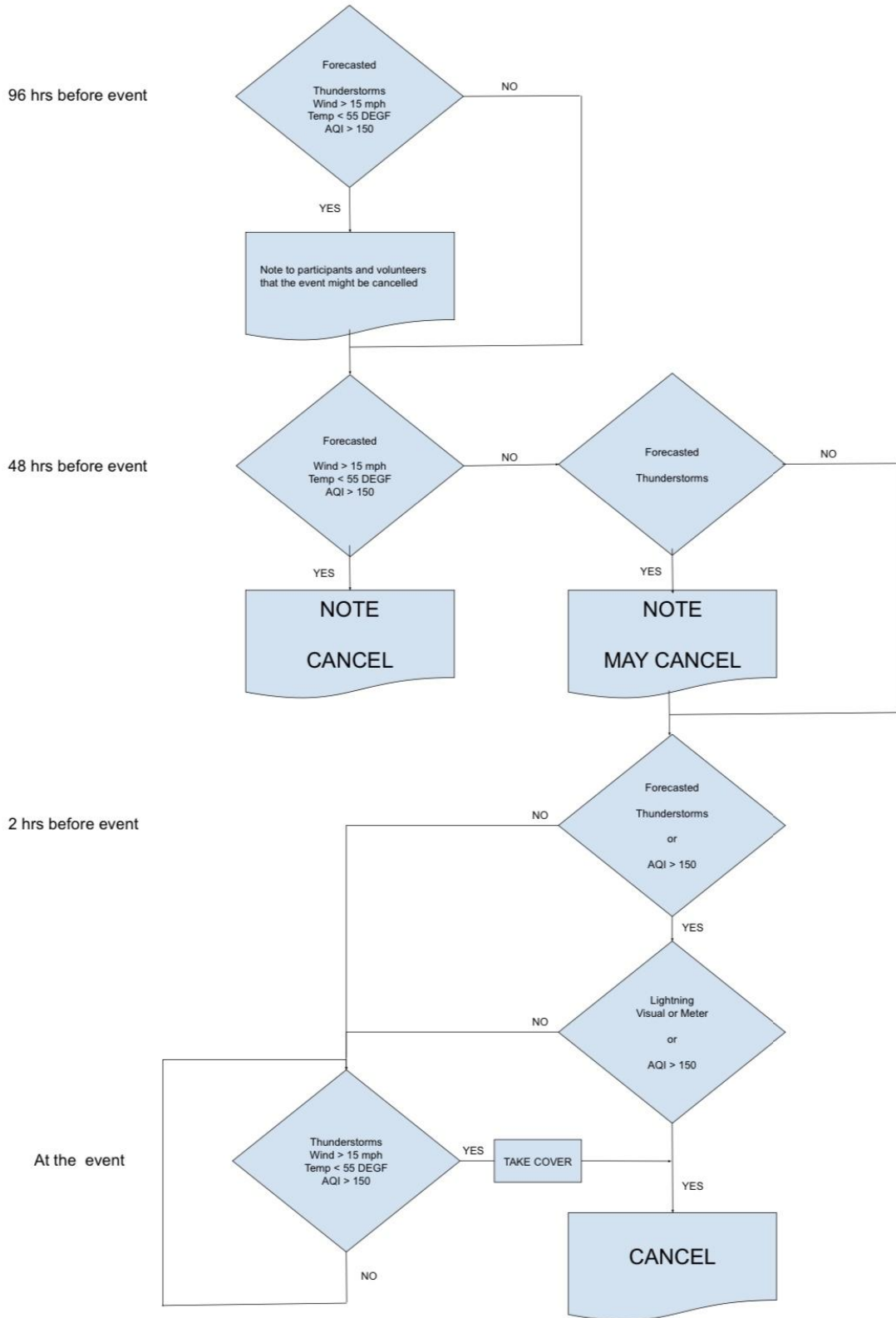
## ORGANIZED EVENT

### STOP-DUE-TO-WEATHER/AIR-QUALITY FLOWCHART

PORPA organizes rowing EVENTS, races, special rows with outside visitors or regattas, and because of the possibility of having inclement weather or unhealthy air quality disrupting the event, we have come up with the following flowchart to minimize possible incidents or losses. Actions to be taken by the organizing committee.

- 1) 96 hours before an organized EVENT, the weather forecast and air quality index should be monitored.
- 2) If thunderstorms, sustained winds above 15 mph or air temperature (with wind-chill) below 55 DEGF are expected or if the air quality index is expected to be above 150 send out notice to participants that EVENT might be cancelled.
- 3) 48hours before an organized EVENT, the weather forecast and air quality index should be monitored.
- 4) If sustained winds above 15 mph, air temperature with wind-chill below 55 DEGF or air quality index above 150 are expected, send out notice to participants that EVENT has been cancelled and follow up with telephone call confirmation.
- 5) If thunderstorms are expected send out a second notice to participants that EVENT might be cancelled.
- 6) From 2 hrs before the start and during an organized EVENT, weather and air quality should be monitored and if thunderstorms, sustained winds above 15 mph or air temperature with wind-chill below 55 DEGF or air quality index above 150 unexpectedly move in, the EVENT will be stopped following as safe as possible steps. Electrical activity will be confirmed visually, audibly or with the PORPA lightning meter.

# Event Flowchart



## Attachment 1 - Air Quality Table

AQI Basics for Ozone and Particle Pollution

Daily AQI Color	Levels of Concern	Values of Index	Description of Air Quality
Green	Good	0 to 50	Air quality is satisfactory, and air pollution poses little or no risk.
Yellow	Moderate	51 to 100	Air quality is acceptable. However, there may be a risk for some people, particularly those who are unusually sensitive to air pollution.
Orange	Unhealthy for Sensitive Groups	101 to 150	Members of sensitive groups may experience health effects. The general public is less likely to be affected.
Red	Unhealthy	151 to 200	Some members of the general public may experience health effects; members of sensitive groups may experience more serious health effects.
Purple	Very Unhealthy	201 to 300	Health alert: The risk of health effects is increased for everyone.
Maroon	Hazardous	301 and higher	Health warning of emergency conditions: everyone is more likely to be affected.